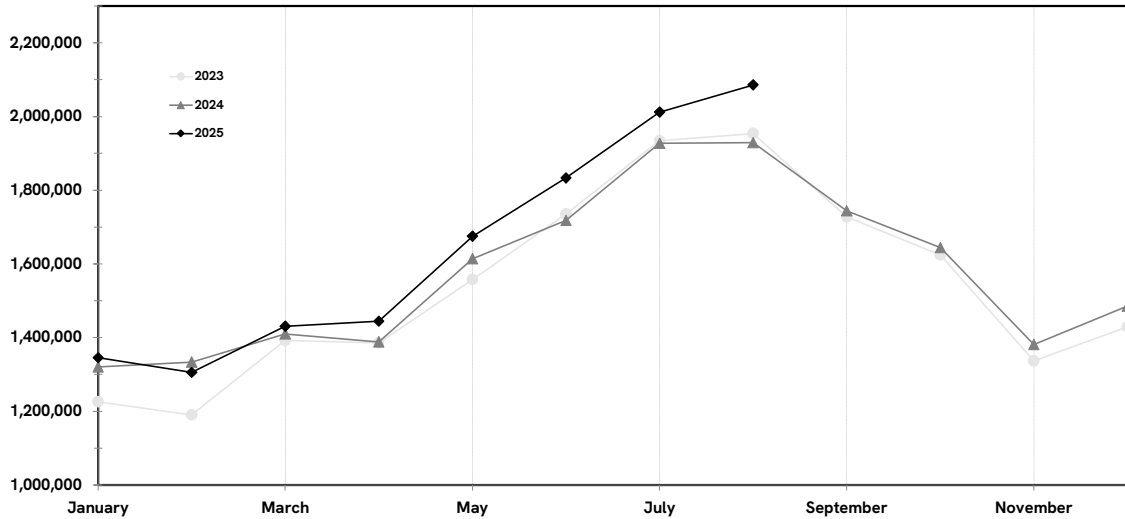


CALGARY INTERNATIONAL AIRPORT LOCAL E&D PASSENGER STATISTICS ¹

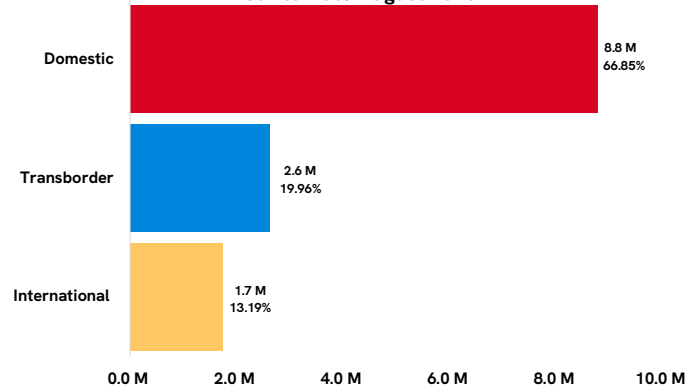
	% Δ 2021	% Δ 2022	2023	% Δ	2024	% Δ	2025	% Δ
January	-81.0%	155.1%	1,226,098	87.6%	1,320,799	7.7%	1,345,203	1.8%
February	-85.6%	264.2%	1,190,423	70.3%	1,333,245	12.0%	1,305,519	-2.1%
March	-72.7%	327.2%	1,392,200	46.4%	1,410,197	1.3%	1,430,991	1.5%
	-80.8%	243.5%	3,808,721	65.3%	4,064,241	6.7%	4,081,713	0.4%
April	208.1%	406.2%	1,385,673	30.5%	1,388,547	0.2%	1,444,065	4.0%
May	134.5%	571.9%	1,557,941	22.0%	1,614,348	3.6%	1,674,947	3.8%
June	123.8%	343.3%	1,735,533	22.9%	1,717,799	-1.0%	1,833,274	6.7%
	146.5%	422.1%	4,679,147	24.8%	4,720,694	0.9%	4,952,286	4.9%
July	121.3%	142.8%	1,933,998	24.7%	1,927,174	-0.4%	2,012,192	4.4%
August	157.6%	65.7%	1,953,924	23.1%	1,929,182	-1.3%	2,085,838	8.1%
September	150.5%	70.8%	1,727,936	23.8%	1,744,015	0.9%	-	-
	144.6%	87.9%	5,615,858	23.9%	5,600,371	-0.3%	4,098,030	6.3%
October	143.9%	74.6%	1,624,131	15.7%	1,644,302	1.2%	-	-
November	177.3%	54.5%	1,336,681	10.2%	1,381,040	3.3%	-	-
December	225.5%	33.5%	1,428,985	14.6%	1,485,436	4.0%	-	-
	180.4%	53.1%	4,389,797	13.6%	4,510,778	2.8%	-	-
Total (YTD)	11.47%	128.44%	18,493,523	27.96%	18,896,084	2.18%	13,132,029	3.88%
					<i>12 Months Ended</i>		<i>21,316,004</i>	<i>2.91%</i>

¹ E&D (enplaned & deplaned) statistics include non-revenue passengers. Figures are subject to change and may contain estimates.

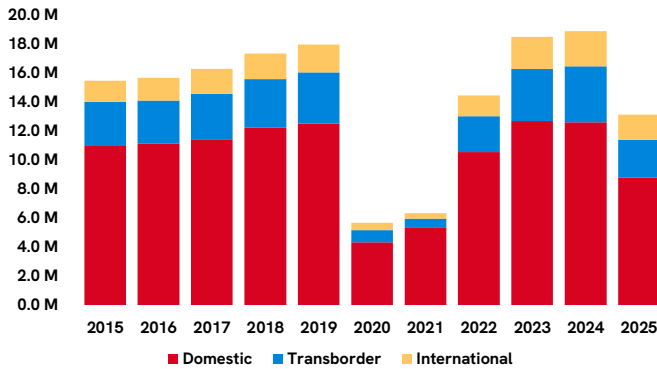
LOCAL E&D PASSENGERS BY MONTH



Local E&D Passengers by Sector Year to Date August 2025



HISTORICAL E&D PASSENGERS 2015 - 2025



THE CALGARY AIRPORT AUTHORITY
PASSENGER STATISTICS BY SECTOR

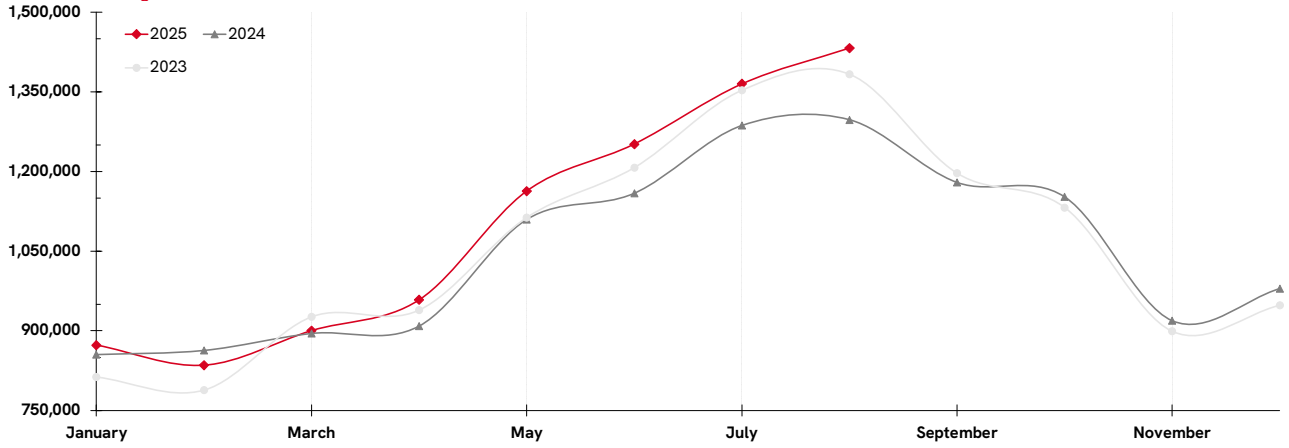
	% Δ 2021	% Δ 2022	2023	% Δ	2024	% Δ	2025	% Δ
A. Domestic Passengers								
January	-76.8%	130.0%	813,222	71.0%	855,036	5.1%	873,055	2.1%
February	-79.8%	183.7%	788,360	57.2%	863,082	9.5%	835,255	-3.2%
March	-61.6%	211.6%	926,220	40.8%	895,116	-3.4%	900,422	0.6%
	-74.3%	174.9%	2,527,802	54.7%	2,613,234	3.4%	2,608,732	-0.2%
April	194.7%	279.4%	938,902	27.1%	909,100	-3.2%	958,409	5.4%
May	120.6%	457.8%	1,113,094	15.3%	1,109,278	-0.3%	1,163,057	4.8%
June	115.7%	258.2%	1,207,140	12.9%	1,159,111	-4.0%	1,251,419	8.0%
	135.5%	316.2%	3,259,136	17.5%	3,177,489	-2.5%	3,372,885	6.1%
July	113.8%	97.2%	1,353,196	15.2%	1,286,563	-4.9%	1,365,107	6.1%
August	144.2%	38.6%	1,383,272	14.2%	1,297,239	-6.2%	1,432,449	10.4%
September	127.2%	46.7%	1,196,742	15.5%	1,179,194	-1.5%	-	-
	129.7%	57.3%	3,933,210	15.0%	3,762,996	-4.3%	2,797,556	8.3%
October	111.8%	59.6%	1,132,140	8.8%	1,152,354	1.8%	-	-
November	133.8%	43.8%	899,207	6.3%	918,917	2.2%	-	-
December	199.1%	20.8%	948,213	12.2%	979,247	3.3%	-	-
	144.5%	40.8%	2,979,560	9.1%	3,050,518	2.4%	-	-
Total (YTD)	23.91%	96.42%	12,699,708	20.25%	12,604,237	-0.75%	8,779,173	4.83%
12 Months Ended							14,306,124	2.7%

B. Transborder Passengers								
January	-89.4%	220.0%	222,742	133.1%	265,893	19.4%	259,873	-2.3%
February	-96.1%	971.4%	226,197	93.6%	275,331	21.7%	266,531	-3.2%
March	-93.9%	1802.9%	273,482	52.9%	304,412	11.3%	302,625	-0.6%
	-93.0%	679.9%	722,421	84.7%	845,636	17.1%	829,029	-2.0%
April	654.1%	1535.7%	269,749	33.2%	272,829	1.1%	267,084	-2.1%
May	418.3%	1417.6%	275,920	34.2%	301,102	9.1%	308,391	2.4%
June	244.9%	1589.3%	340,159	45.9%	357,969	5.2%	370,963	3.6%
	381.1%	1514.1%	885,828	38.1%	931,900	5.2%	946,438	1.6%
July	244.9%	808.5%	382,788	48.1%	427,802	11.8%	424,594	-0.7%
August	479.9%	371.4%	373,680	50.4%	415,751	11.3%	420,913	1.2%
September	623.3%	251.7%	342,910	43.2%	365,548	6.6%	-	-
	457.9%	400.1%	1,099,378	47.3%	1,209,101	10.0%	845,507	0.2%
October	615.7%	147.8%	324,218	33.3%	313,788	-3.2%	-	-
November	490.2%	86.1%	273,820	25.6%	273,512	-0.1%	-	-
December	333.5%	61.4%	280,622	28.7%	289,712	3.2%	-	-
	441.3%	93.9%	878,660	29.3%	877,012	-0.2%	-	-
Total (YTD)	-27.92%	316.95%	3,586,287	45.90%	3,863,649	7.73%	2,620,974	-0.00%
12 Months Ended							4,279,285	1.5%

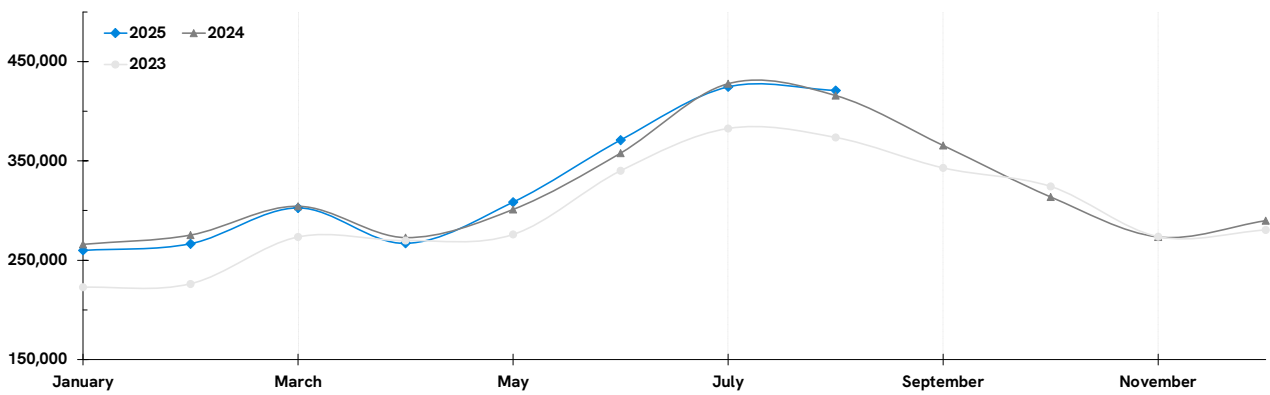
C. International Passengers								
January	-89.0%	321.5%	190,134	129.9%	199,870	5.1%	212,275	6.2%
February	-97.6%	1792.1%	175,866	118.2%	194,832	10.8%	203,733	4.6%
March	-98.0%	5161.4%	192,498	67.9%	210,669	9.4%	227,944	8.2%
	-94.4%	966.6%	558,498	100.9%	605,371	8.4%	643,952	6.4%
April	648.4%	4554.6%	177,022	47.3%	206,618	16.7%	218,572	5.8%
May	-	2961.2%	168,927	59.2%	203,968	20.7%	203,499	-0.2%
June	-	1625.5%	188,234	70.7%	200,719	6.6%	210,892	5.1%
	3505.8%	2605.7%	534,183	58.7%	611,305	14.4%	632,963	3.5%
July	662.5%	687.4%	198,014	66.7%	212,809	7.5%	222,491	4.5%
August	554.1%	312.8%	196,972	55.0%	216,192	9.8%	232,476	7.5%
September	606.7%	179.8%	188,284	56.4%	199,273	5.8%	-	-
	596.0%	312.0%	583,270	59.3%	628,274	7.7%	454,967	6.1%
October	568.1%	122.7%	167,773	39.9%	178,160	6.2%	-	-
November	585.4%	86.9%	163,654	9.9%	188,611	15.2%	-	-
December	355.3%	85.0%	200,150	9.1%	216,477	8.2%	-	-
	461.2%	94.4%	531,577	17.5%	583,248	9.7%	-	-
Total (YTD)	-30.50%	297.98%	2,207,528	54.05%	2,428,198	10.00%	1,731,882	5.24%
12 Months Ended							2,730,595	6.6%

THE CALGARY AIRPORT AUTHORITY PASSENGER STATISTICS BY SECTOR

A. Domestic Passengers



B. Transborder Passengers



C. International Passengers

